

## SpeedPalm-V5L

Face & Palm Authentication Terminal  
with Video Intercom Capability



+/- 30  
Wide Pose Angle  
Acceptance



+/- 60°  
Wide Palm Pose Angle  
Acceptance



Speedy  
Authentication



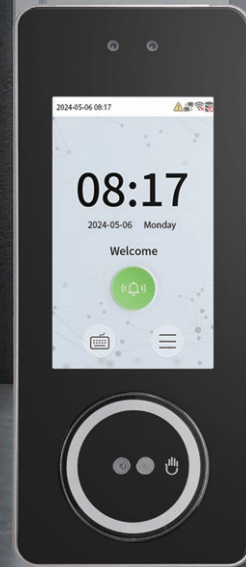
Touchless for  
Better Hygiene



Video Intercom  
(SIP)

Compatible with

 ZKBio CVSecurity



SpeedPalm-V5L

SpeedPalm-V5L is a smart access control terminal equipped with the visible light face and palm authentication technology, which applies the latest algorithms and advanced computer vision technology. It supports a variety of identification methods, including face/palm/card, etc. Besides, the terminal supports large capacity and speedy authentication.

SpeedPalm-V5L eliminates hygiene concerns with contactless biometric technology. It is also equipped with anti-spoofing algorithms for facial and palm authentication to defend against almost all types of fake photo and video attacks. Importantly, high-precision palm authentication takes only 0.35s per hand. The palm data is then compared to the maximum of 5,000 palm templates.

Besides, SpeedPalm-V5L is an access control terminal featuring a video intercom function. It fully improves the video intercom experience and can be compatible with video intercom indoor unit with SIP protocol.

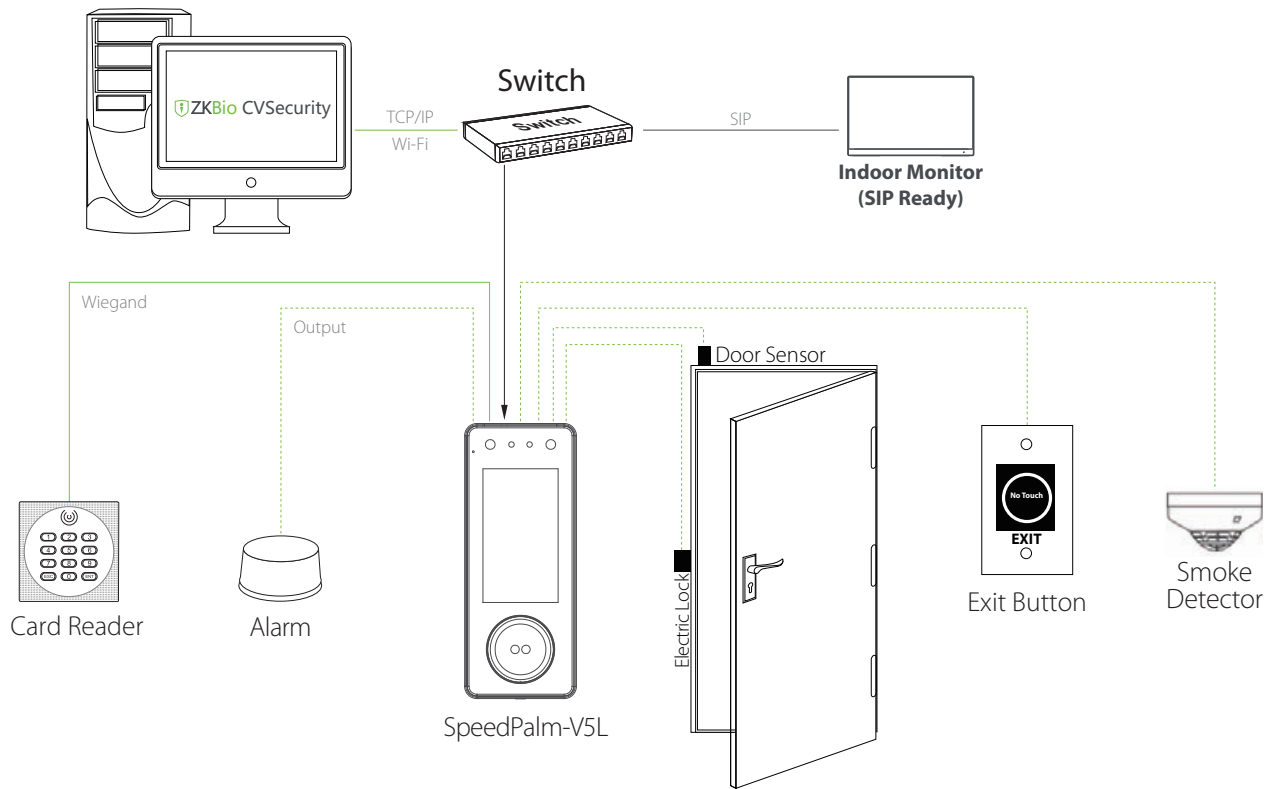
### Features

- Visible Light Facial & Palm Authentication
- Better hygiene with touchless biometric authentication
- Anti-spoofing algorithm against print attack (laser, color and B/W photos), videos attack and 3D mask attack
- Available card modules: 125 KHz ID card / 13.56MHz IC card
- New palm module adapts to a variety of lighting conditions, and is equipped with multi-color LED lights to assist in palm positioning to enhance the user experience
- HD video door phone via SIP 2.0 Protocol. Compatible with ZKTeco SIP Video Intercom Indoor Monitor

## Specifications

Model	SpeedPalm-V5L
Display	5"@ ISP Color LCD Touch Screen (720*1280)
Camera	WDR Low Light Camera @ 2MP
Operation System	Linux
Hardware	CPU: 1GHz Dual Core RAM: 1G; ROM: 8G Supplement Light: Yes
Visual Indicator	Steady Green LED: Normal Status Steady White LED: Authentication in Progress Steady Red LED: Error/ Fault Steady Orange LED: Object nearby detected
Authentication Method	Face / Palm / Card / Password (Virtual Keypad)
Face Template Capacity	10,000 (1:N)
Palm Template Capacity	5,000 (1:N)
Card Capacity	10,000 (1:N)
Transaction Capacity	200,000
Biometric Authentication Speed	less than 1 sec (Facial Authentication) less than 0.35 sec (Palm Authentication)
Touchless Biometric Authentication Distance	1cm to 100cm (Facial Authentication) 5cm to 15cm (Palm Authentication)
False Acceptance Rate (FAR)%	FAR ≤ 0.01% (Visible Light Facial Authentication) FAR ≤ 0.01% (Palm Authentication)
False Rejection Rate (FRR)%	FRR ≤ 0.02% (Visible Light Facial Authentication) FRR ≤ 0.17% (Palm Authentication)
Biometric Algorithm	ZKFace V3.9 & PalmElite3.3.3
Card Type	ID Card@125 kHz (Standard) IC Card@13.56 MHz (Optional)
Communication	TCP/IP*1 Wi-Fi (IEEE 802.1 a/b/g/n/ac) @2.4GHz ; 5GHz Wiegand (Input or Output)*1 RS485: ZKTeco RS485*1 Aux Inputs *1, Electric Lock*1, Door Sensor*1, Exit Button*1, Alarm *1
Standard Functions	ADMS, T9 Input, 14-digit User ID, Access Levels, Groups, Holidays, Antipassback, Record Query, Schedule Bell, Tamper Switch Alarm, Mask Detection ,Multiple Verification Methods, SIP 2.0 Protocol, AC Push and TA Push Protocol Switch
Optional Functions	IC Card, ZSmart APP
Power Supply	12V DC 3A
Operating Temperature	-10°C to 45°C (14°F to 113°F)
Operating Humidity	10% to 90% RH (Non-condensing)
Dimensions	227.3 *92.3 * 24.5 (mm) (L*W*D)
Gross Weight	1.3 Kg
Net Weight	0.62 Kg
Supported Software	Software: ZKBio CVAccess / ZKBio Time / ZKBio CVSecurity Mobile App: ZSmart
Installation	Wall-mount (Compatible with Asian Gang-box / Single Gang-Box)
Housing Material	Aluminium Alloy
Ingress Protection Rating	/
Certifications	ISO14001, ISO9001, CE, FCC, RoHS

# Configuration



# Dimensions (mm)

